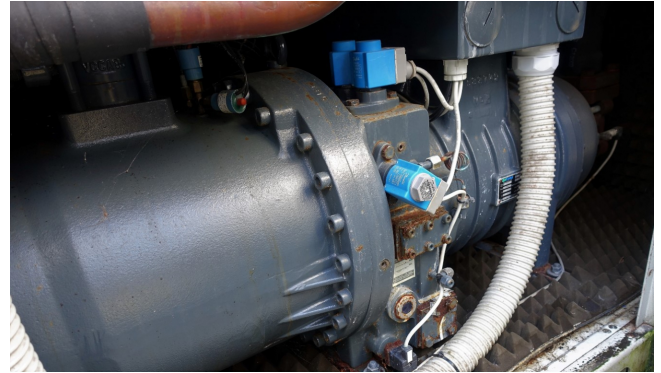


# Refcomp SRC S 213 L4

## Specifications

Marca	Refcomp
Tipo	SRC S 213 L4
Refrigerante	Freon
Refrigerant type	R407 C or other types
kW at 0°C/+40°C	170.8*
kW at -5°C/+40°C	138.9
kW at -10°C/+40°C	110.9
Comentarios	*Capacity based on +2°C/+40°C // Y.O.B. 2002
Peso kg.	515
Tamaños	1550x600x700 mm (LxWxH)
Stock	2



## Description

### Used Refcomp SRC S 213 L4

RefComp compressor SRC S 213 L4 /  
This RefComp uses refrigerant R 407 C  
/ kW 60 / 237 Vol m<sup>3</sup>/h

